

Solar Panel Array Supported By A Steel Space Frame Further Firmenich's Sustainability Initiative

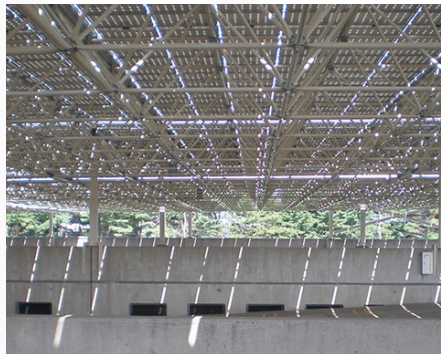


Architect

GeoPeak Energy

Date

Completed in 2010



Project Highlights

One of the visions of global fragrance and flavor powerhouse Firmenich is to be an international leader in sustainability. To that end, the company employed DSI Spaceframes to install one of the largest solar panel arrays in the northeast at its North American headquarters in Plainsboro, New Jersey. The system features 65,000 square feet of high-efficiency solar panels supported by a steel space frame. The 3,000 photovoltaic panels were mounted on the top level of Firmenich's parking deck to capture the sun's energy and convert it into a renewable power source. Space frames often are used for solar panel arrays because they are lighter yet sturdier than traditional steel armature. Their modular nature allows for quick and easy installation, as well, saving time and money. In Firmenich's case, payback on its investment was less than four years. The solar panel array produces 1.2 million kilowatt hours of electricity each year—approximately 12% of the total used at the manufacturing plant. The solar panel array also reduces Firmenich's carbon footprint by saving more than 900 metric tons of carbon dioxide emissions per year.



509 S Westgate St., Addison, IL, 60101
(630) 607-0045

Designs Brought to Life