

# System III

## DSI SPACEFRAMES' EXCLUSIVE SPACE FRAME SYSTEM

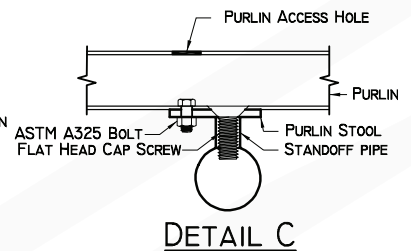
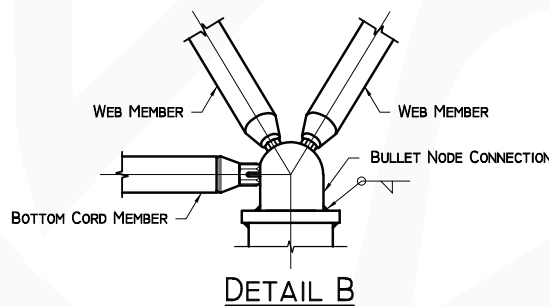
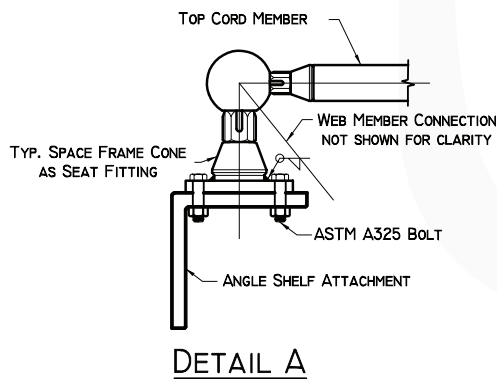
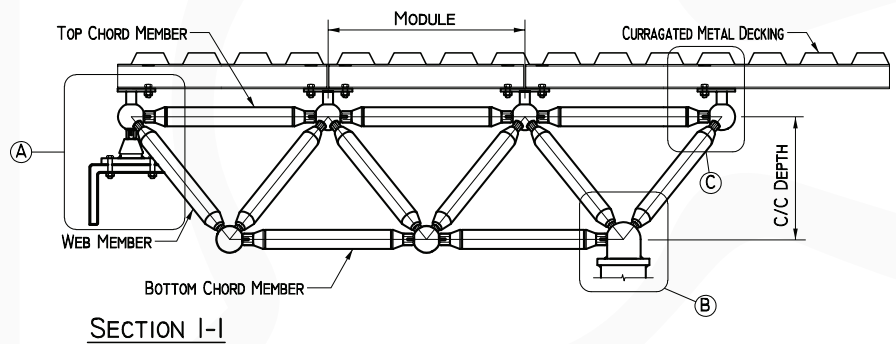
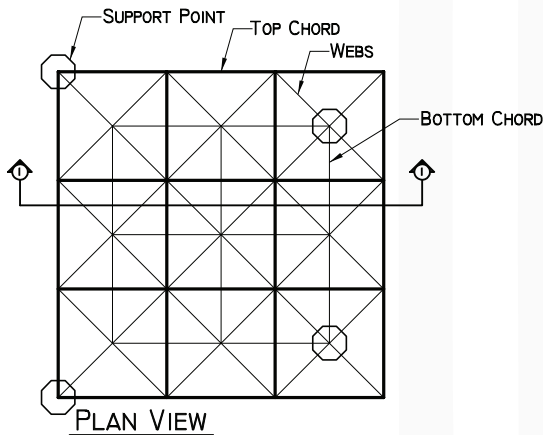
System III is the most versatile and attractive forged steel ball and tube system available today. With virtually unlimited span capability, this exclusive space frame system offers the world's largest span and longest cantilever. Nodal points, including support locations, can be positioned at any point in space and at any orientation. This allows architects and engineers to generate nearly any geometric configuration—from flat structures to organic structural forms.

As with any space frame system, loads are applied at the nodal points; transmitting forces as tension or compression throughout the frame. Member sizes are determined through the analysis of forces under a series of load combinations. Relatively, the node sizes

are determined by the minimum required surfaced area needed to accept all the bolted member connections at each nexus point.

With the advancement of Computer Aided Design, the reality of constructing complex geometries is now common place.

DSI Spaceframes' proprietary design program generates all detailed fabrication cut sheets for each specific member along with the CNC machine code for each custom-drilled node. All components are fabricated in-house with all domestic materials making every space frame 100% Made in America.



509 S Westgate St., Addison, IL, 60101  
(630) 607-0045

Designs Brought to Life