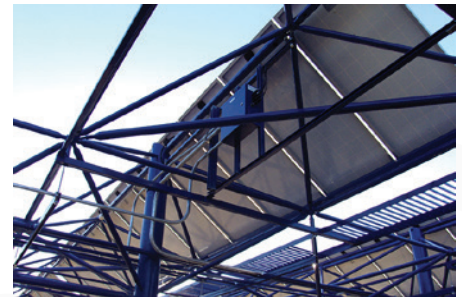


Solar Panels Erected With Space Frame Construction Support Epic Systems' Commitment To Green Investment



Architect

Cunningham Group

Date

Completed 2012

Project Highlights

The campus of medical software giant Epic Systems Corporation in Verona, Wisconsin reflects the company's creativity and high-tech innovation as well as its commitment to sustainability. In 2002, Cunningham Group first brought to life Epic Systems' green vision when the architectural firm designed an environmentally friendly parking structure. Rows of nearly 1,300 solar panels supported by space frame construction—specifically geodesic truss units made by DSI Spaceframes—form a lattice-like slatted canopy that shields cars from the sun while producing usable energy. The space frame's steel members are painted a deep blue to match the light posts in downtown Verona. With a maximum capacity of 280 watts per solar panel, the structure can produce as much as 443,000 kilowatt-hours of electricity a year.



509 S Westgate St., Addison, IL, 60101
(630) 607-0045

Designs Brought to Life