

# Space Frame Structure Makes Campbell High School Sun Shade Practical And Eye-Catching

---

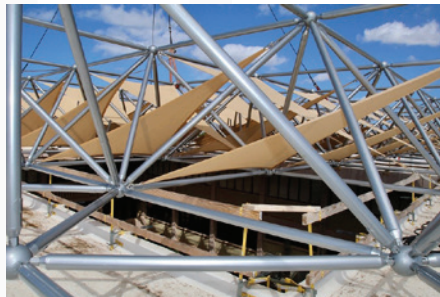


## Architect

MKThink

## Date

Completed 2017



## Project Highlights

In 2016, the Hawaii Department of Education approved additional funding for its Heat Abatement Program, a heat-relief initiative for the state's schools and educational facilities. One of the recipients was Campbell High School, the largest public high school on Oahu. Architectural firm MKThink devised an innovative cooling strategy that uses canopies to reduce solar gain. Hundreds of fabric shades were attached to a space frame structure installed by DSI Spaceframes above the school's outdoor courtyard. The sun shades were mounted to the space frame structure at varying angles to promote air circulation by directing wind downward and allowing heat to escape. The sun shade also lowered the ground temperature by reducing the amount of heat adsorbed by the asphalt and concrete. The lightweight strength and modular design of the space frame structure made it the ideal support for the fabric canvasses—creating a sun shade that is as aesthetically pleasing as it is functional.



509 S Westgate St., Addison, IL, 60101  
(630) 607-0045

Designs Brought to Life